

# Contact Ascent Advice and Counselling

## West Hub

Women & Girls  
Network

Freephone

0808 801 0660

[advice@wgn.org.uk](mailto:advice@wgn.org.uk)

Mon-Fri 10am-4pm

Wed 6-8pm

Brent  
Bromley  
Croydon  
Ealing  
Hammersmith & Fulham  
Harrow  
Hillingdon  
Hounslow  
Kensington & Chelsea  
Kingston  
Lambeth  
Lewisham  
Merton  
Richmond  
Sutton  
Wandsworth  
Westminster

## East Hub

Barking & Dagenham  
Barnet  
Bexley  
Camden  
City  
Enfield  
Greenwich  
Hackney  
Haringey  
Havering  
Islington  
Newham  
Redbridge  
Southwark  
Tower Hamlets  
Waltham Forest

Solace Advice

Freephone

0808 802 5565

[advice@solacewomensaid.org](mailto:advice@solacewomensaid.org)

Mon-Fri 10am-4pm

Tues 6-8pm

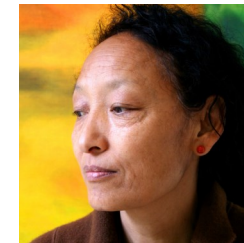
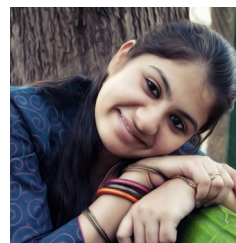
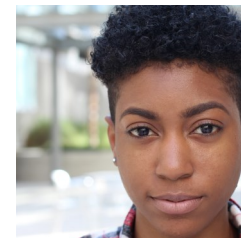
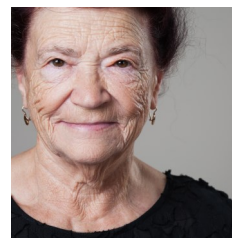
Rights of Women London Legal Advice Line - 020 7608 1137

[www.rightsofwomen.org.uk/get-information/](http://www.rightsofwomen.org.uk/get-information/)



# Advice and Counselling

Pan-London collaboration providing specialist advice and counselling to women and girls aged 14+ affected by gender-based violence.



London  
VAWG  
Consortium

## Ascent Advice and Counselling

### What is Ascent Advice and Counselling?

Funded by London Councils and part of the London Violence against Women and Girls (VAWG) Consortium, Ascent Advice and Counselling is comprised of 14 specialist organisations (see list opposite).

All partners have a wealth of experience of working with women and girls affected by **gender-based violence**. We provide a range of advice and counselling services to women, aged 16+ (except for 1 Pan London Caseworker role for women aged 14-25 years) across every London borough.

---

### Advice

We provide advice and support to women and girls affected by all forms of gender-based violence as well as support to professionals. Including:

Specialist **BME focused advice** from BME organisations across London.

Specialist **Housing Advice, Young Women's Advice (aged 14+), and Sexual Exploitation / Problematic Substance Use Advice** —on a Pan London basis.

To receive advice or make a referral call one of our advice hub, please see overleaf for further details.

**Our services also include:**

**London legal advice:** call Rights of Women London Line on 020 7608 1137.

**No Recourse to Public Funds financial Support** - for assistance download the application form at <http://www.southallblacksisters.org.uk/no-recourse-fund/#nrf>

### In-Borough Counselling and Groups

We provide 1-1 counselling and groups in every London borough.

**1-1 Counselling:** up to 20 sessions of accredited BACP counselling.

**Ascent Moving Forward Group:** this will take place 3 times a year for 8 sessions each (term-time only) and is designed to provide access for women who are ready to participate in group work. The group is for women over 16 who are standard to medium risk level e.g. IDVA step-down service users.

### Specialist Provision

**Specialist BME 1-1 Counselling and groups** available on a regional basis in a number of languages.

**Sexual Violence 1-1 Counselling and groups** available on a regional basis. All four London Rape Crisis providers are members of this partnership.

To make a referral call one of our hubs, please see overleaf for further details.

---

### Ascent Partners

